



Vehicle Inspection Checklist

Car Checker / Oisin Hennessy / 16 Jan 2024

Complete

Score	39 / 40 (97.5%)	Flagged items	0	Actions	0
--------------	-----------------	----------------------	---	----------------	---

Client / Site

Car Checker

Location

Mentone

Prepared by

Oisin Hennessy

Conducted on

16 Jan 2024 12:20 AEDT

Audit

39 / 40 (97.5%)

General Information

Select vehicle identification type



Photo 1



Photo 2

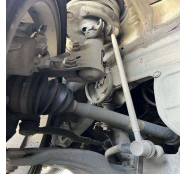


Photo 3

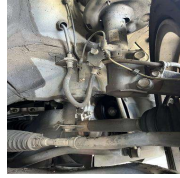


Photo 4

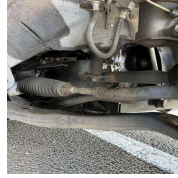


Photo 5

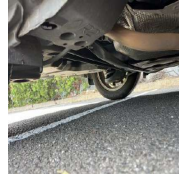


Photo 6



Photo 7



Photo 8

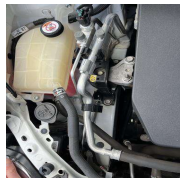


Photo 9



Photo 10



Photo 11



Photo 12

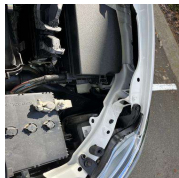


Photo 13



Photo 14



Photo 15



Photo 16



Photo 17



Photo 18



Photo 19



Photo 20



Photo 21

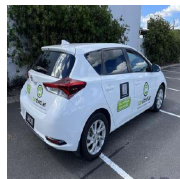


Photo 22



Photo 23

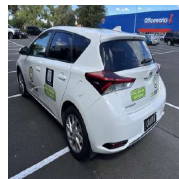


Photo 24



Photo 25



Photo 26



Photo 27



Photo 28



Photo 29



Photo 30

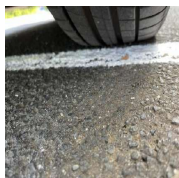


Photo 31

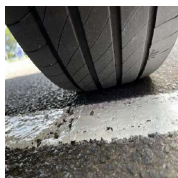


Photo 32

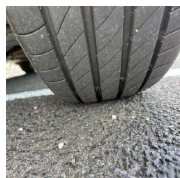


Photo 33

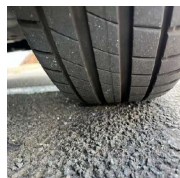


Photo 34

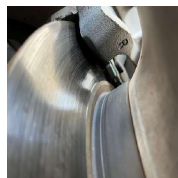


Photo 35



Photo 36



Photo 37



Photo 38



Photo 39



Photo 40



Photo 41



Photo 42



Photo 43



Photo 44



Photo 45



Photo 46



Photo 47



Photo 48



Photo 49



Photo 50



Photo 51



Photo 52

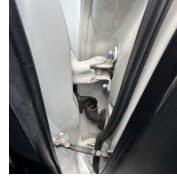


Photo 53



Photo 54



Photo 55



Photo 56



Photo 57



Photo 58



Photo 59



Photo 60



Photo 61



Photo 62

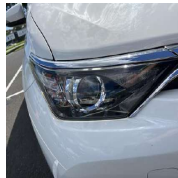


Photo 63



Photo 64

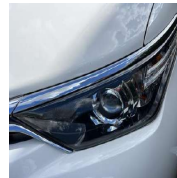


Photo 65



Photo 66



Photo 67



Photo 68



Photo 69

Enter Mileage

80788

Take photo of vehicle



Photo 70



Photo 71

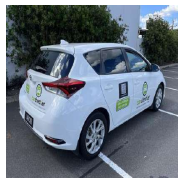


Photo 72

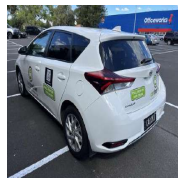


Photo 73



Photo 74



Photo 75

Inspection

39 / 40 (97.5%)

BRAKE SYSTEM

5 / 5 (100%)

Service brakes

OK

Will need front and rear brake pads in next 6-8 months



Photo 76

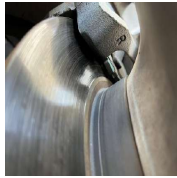


Photo 77

Parking brakes	OK
Brake drums/rotors	OK
Brake hose	OK
Low pressure warning device	OK
COUPLING DEVICES	
Fifth wheel	Not Applicable
Pintle hooks	Not Applicable
Drawbar/towbar eye and tongue	Not Applicable
ENGINE OPERATION	
	3 / 3 (100%)
Fan/compressor belts	Not Applicable
Oil pressure	OK
Radiator	OK
Battery	OK

REFERENCE: Vehicle Battery clean and maintained regularly
[This is an example of how you can use iAuditor to include best practice reference images in your templates to assist with inspections]



EXHAUST SYSTEM	3 / 3 (100%)
Check below driver position	OK
Check for damage to wiring and fuel line	OK
Muffler	OK
FUEL SYSTEM	3 / 3 (100%)
Visible leak	OK
Fuel tank filler cap missing	OK
Fuel tank securely attached	OK
LIGHTING DEVICES	6 / 6 (100%)
Head lights	OK
Brake lights	OK
Tail lights	OK
Dash lights	OK
Clearance lights	OK
Turn indicators	OK
SAFETY EQUIPMENT	1 / 1 (100%)
Seat belts available and working	OK
Fire extinguisher	Not Applicable
Fags, flares	Not Applicable
Decals	Not Applicable
Spare bulbs, fuses	Not Applicable
SAFE LOADING	
Protection against shifting cargo	Not Applicable
Lift gate and accessories	Not Applicable

STEERING MECHANISM		6 / 6 (100%)
Steering wheel free play		OK
Steering column		OK
Front axle beam		OK
Steering gear box		Not Applicable
Pitman arm		Not Applicable
Power steering		OK
Ball and socket joints		OK
Tie rods, drag links		OK
SUSPENSION		3 / 3 (100%)
U-bolts and spring hangers		OK
Spring assembly		OK
Tongue, radius or tracking components		OK
TIRES		2 / 2 (100%)
Condition		OK
Will need 2 tyres in next 6 months		
Air pressure		OK
Chains		Not Applicable
WHEELS		1 / 1 (100%)
Wheels and rims		OK
Lock or side rings		Not Applicable
Fasteners		Not Applicable
Welds		Not Applicable
WINDSHIELD		2 / 2 (100%)
Glass free of cracks, discoloration		OK

Slightly pitted

Wiper power unit, blades

OK

MISCELLANEOUS

4 / 5 (80%)

Transmission fluid

OK

Clutch free play

Not Applicable

Heater/defroster

OK

Mirrors

OK

Frame

OK

Body

Needs Repair

Slight hail damage on roof

SUMMARY

List any other conditions which may prevent safe operation of this vehicle

Enter any other observations

Rate the overall condition of the vehicle

Good

Recommendations

Enter recommendations here

2 keys
Full service books
Will need 2 tyres in next 6 months along with front and rear brake pads.

Slight/minor hail damage on roof.
Front bar will need to be painted
Touch ups done on bonnet
Missing rear parcel shelf.

Drivers great and no engine noise or issues with transmission at time of inspection

COMPLETION

Full Name and Signature of Inspector



16 Jan 2024 17:33 AEDT

Media summary



Photo 1



Photo 2



Photo 3



Photo 4



Photo 5



Photo 6



Photo 7



Photo 8



Photo 9



Photo 10



Photo 11



Photo 12



Photo 13



Photo 14



Photo 15



Photo 16



Photo 17



Photo 18



Photo 19



Photo 20



Photo 21



Photo 22



Photo 23



Photo 24



Photo 25



Photo 26



Photo 27



Photo 28



Photo 29



Photo 30



Photo 31



Photo 32

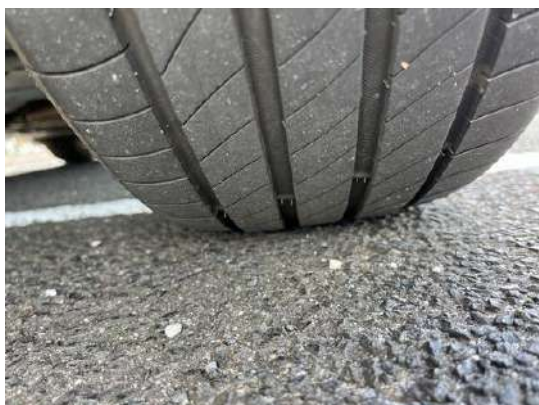


Photo 33



Photo 34



Photo 35



Photo 36



Photo 37



Photo 38



Photo 39



Photo 40



Photo 41



Photo 42



Photo 43



Photo 44



Photo 45



Photo 46



Photo 47



Photo 48



Photo 49



Photo 50



Photo 51



Photo 52



Photo 53



Photo 54



Photo 55



Photo 56



Photo 57



Photo 58



Photo 59



Photo 60



Photo 61



Photo 62



Photo 63



Photo 64



Photo 65



Photo 66



Photo 67



Photo 68



Photo 69



Photo 70



Photo 71



Photo 72



Photo 73



Photo 74



Photo 75



Photo 76



Photo 77